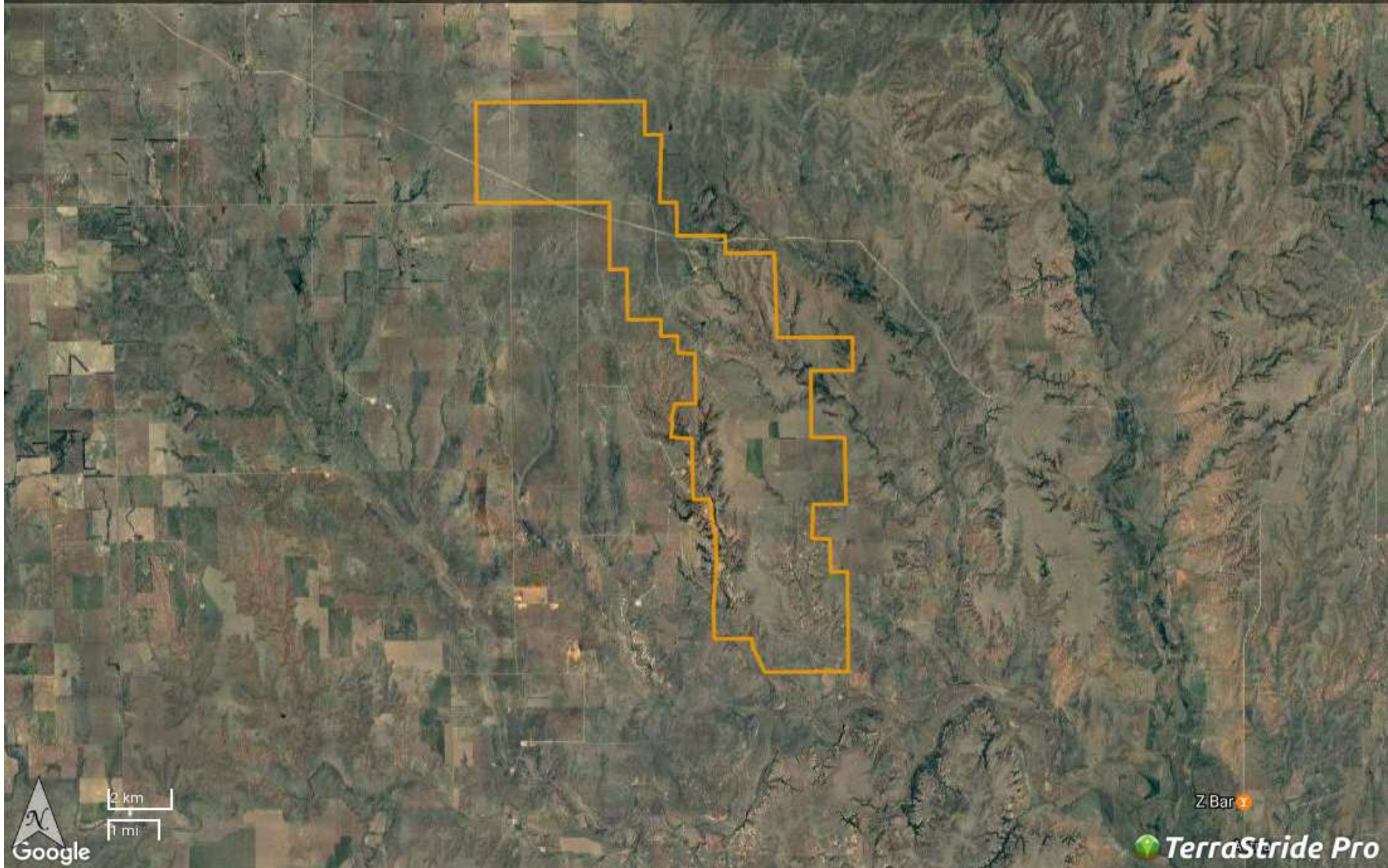




KS - Comanche Gregg Ranch
10,741 acres +/-
11231.74 acres
\$13,000,000

Brown Realty Co
Cliff and Gayla Mckinney
(620) 886-1006
cgmc5bar@outlook.com
<http://www.brownrealtyco.com/>



Property Report—KS - Comanche Gregg Ranch 10,741 acres +/-

Legend

Feature	Icon	Colors
Boundary		

Description

Located between Medicine Lodge and Coldwater, KS just south of US 160 in beautiful Comanche County. The ranch has been in the Gregg family since the 1880's and is set up for a year-round cattle operation. It comes complete with a nice family home, a ranch house/bunkhouse, corrals, modern working facilities, barns, water wells, improved pastures, fencing and more. The property has 10,741 continuous acres with numerous live water springs that are beneficial to the ranch as well as desirable wildlife species. The ranch is home to huge flocks of turkeys, quail, trophy whitetail deer, coyote and there is even a prairie dog town. Mule deer and pronghorn also have frequencies the property. This ranch is truly a testament to many, many years of hard work and pride of ownership. This is very obvious when observing the condition of not only improvements but the land as well. Please see word documents for detailed list of all improvements. Brown Realty Co Jerry Brown, Broker 2189 Hwy 425 Rayville LA 71269 318-728-9544

DISCLAIMER: The information contained herein is as obtained by this broker from sellers, owners, or other sources. This information is considered reliable, neither this broker nor owners make any guarantee, warranty or representation as to correctness of any data or descriptions and the accuracy of such statements. The correctness and / or accuracy of any and all statements should be determined through independent investigation made by the prospective purchaser. Any offer for sale is subject to prior sale, errors and omissions, change of price, terms or other conditions or withdrawal from sale

Generated on: Jan. 30, 2017