

LA - Morehouse Murphy 86 acres +/-

85.88 Acres
\$235,000.00



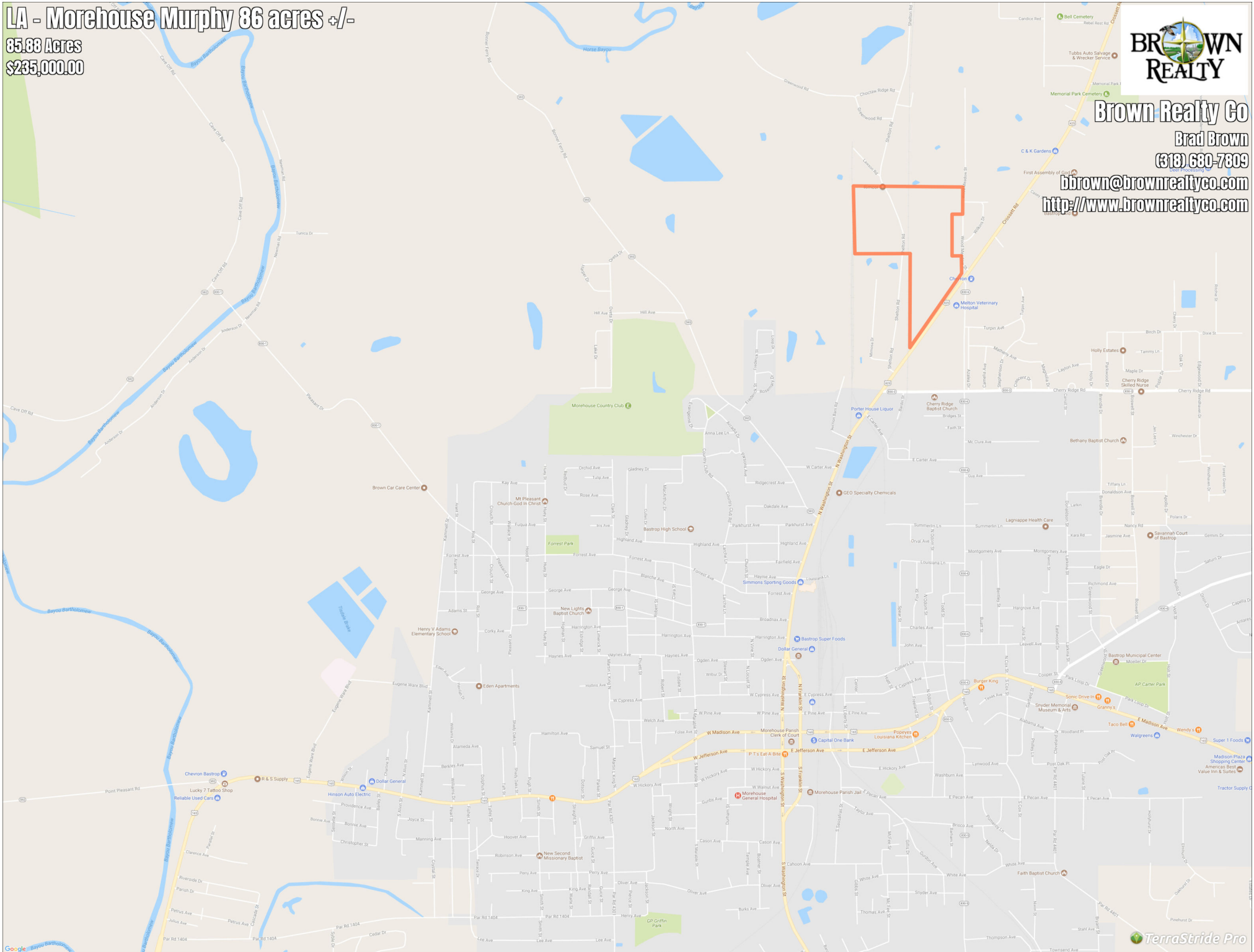
Brown Realty Co

Brad Brown

(818) 680-7809

bbrown@brownrealtyco.com

http://www.brownrealtyco.com



LA - Morehouse Murphy 86 acres +/-

Legend

 Boundary

Description

This is a nice tract located right off of Hwy 425 just north of Bastrop. This property has road frontage on three sides. There is frontage on Shelton Rd, Wood Meadow St. and Hwy 425. This tract will offer some commercial development off of Hwy 425 and some residential development off of Shelton Rd and Wood Meadow St. There is some timber value on this tract. No cruise available.
Brown Realty Co Jerry Brown Broker 2189 hwy 425 Rayville LA
71269 318-728-9544

DISCLAIMER: The information contained herein is as obtained by this broker from sellers, owners, or other sources. This information is considered reliable, neither this broker nor owners make any guarantee, warranty or representation as to correctness of any data or descriptions and the accuracy of such statements. The correctness and / or accuracy of any and all statements should be determined through independent investigation made by the prospective purchaser. Any offer for sale is subject to prior sale, errors and omissions, change of price, terms or other conditions or withdrawal from sale in whole or in part, by seller without notice and at the sole discretion of seller. Readers are urged to form their own independent conclusions and evaluations in consultation with legal counsel, accountants, and/or investment advisors concerning and all material contained herein.

Generated on: Aug. 30, 2017