

LA - Richland Woodlace Farm Inc 452 acres +/-



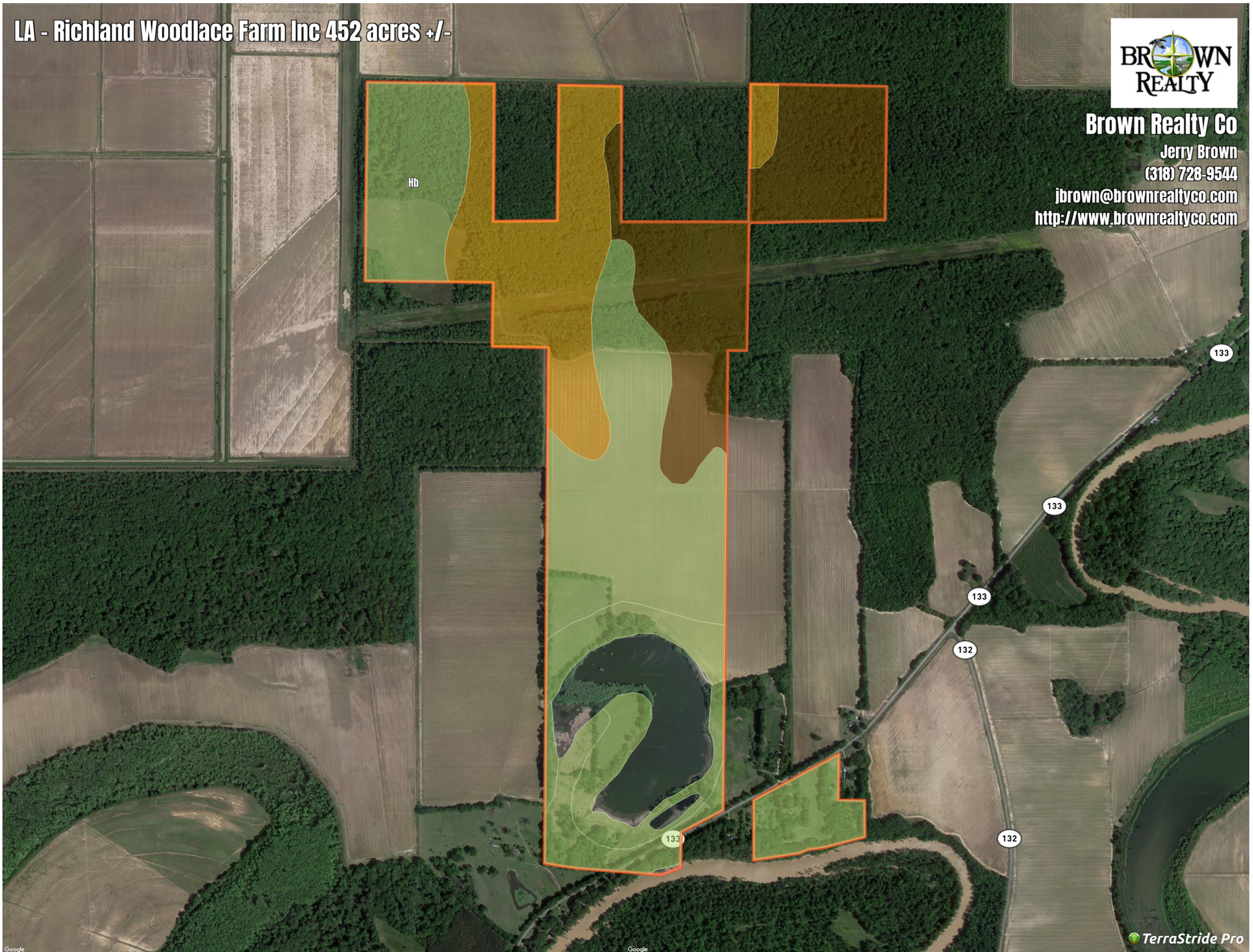
Brown Realty Co

Jerry Brown

(318) 728-9544

jbrown@brownrealtyco.com

<http://www.brownrealtyco.com>



LA - Richland Woodlace Farm Inc

452 acres +/-

Legend

 Boundary

DISCLAIMER: The information contained herein is as obtained by this broker from sellers, owners, or other sources. This information is considered reliable, neither this broker nor owners make any guarantee, warranty or representation as to correctness of any data or descriptions and the accuracy of such statements. The correctness and / or accuracy of any and all statements should be determined through independent investigation made by the prospective purchaser. Any offer for sale is subject to prior sale, errors and omissions, change of price, terms or other conditions or withdrawal from sale in whole or in part, by seller without notice and at the sole discretion of seller. Readers are urged to form their own independent conclusions and evaluations in consultation with legal counsel, accountants, and/or investment advisors concerning and all material contained herein.

Generated on: Feb. 12, 2020

LA - Richland Woodlace Farm Inc 452 acres +/-

Soil Report

Symbol	Map Unit Description	Farm Land Class	Area (AC)	Available Water Storage (0-150cm - Weighted Average)	Flooding Frequency (Maximum)	Drainage Class (Dominant Condition)	Drainage Class (Wettest Component)	Hydric Classification	Water Table Depth (Annual Minimum)	Water Table Depth (April to June Minimum)	Bedrock Depth (Minimum)	Soil Order
Hb	Hebert silt loam	All areas are prime farmland	14.05	27.0	None	Somewhat poorly drained	Somewhat poorly drained	2	69	69	0	Alfisols
Pd	Perry clay	All areas are prime farmland	95.41	22.5	Rare	Poorly drained	Poorly drained	90	31	31	0	Vertisols
Pr	Portland clay	All areas are prime farmland	85.55	23.0	Rare	Somewhat poorly drained	Somewhat poorly drained	2	46	46	0	Inceptisols
W	Water	Not prime farmland	45.51	0.0				0	0	0	0	
Rh	Rilla-Hebert silt loams, gently undulating	All areas are prime farmland	37.35	29.3	None	Well drained	Somewhat poorly drained	2	69	69	0	Alfisols
Sr	Sterlington silt loam, 1 to 3 percent slopes	All areas are prime farmland	21.26	30.0	None	Well drained	Well drained	1	0	0	0	Alfisols
Ra	Rilla silt loam, 0 to 1 percent slopes	All areas are prime farmland	17.54	31.2	None	Well drained	Well drained	2	153	153	0	Alfisols